



3310

PRINCE WILLIAM COMMONS
BUILDING 10

Noble Pond Way

WOODBIDGE, VA 22193

Property Features

- Office/Flex/Retail/R&D
- Potential Plug & Play Available with Flexible Terms and Shared Conference Rooms
- Ceiling Height: 24' R&D / 9'-10' Office
- Column Spacing: 40'w x 40'd
- Drive-in Doors: 12'w x 14'h
- Parking: 3.00 Ratio
- Amenities Close By
- Premier Signage
- MPSI 2010 Traffic Volume Estimate at Prince William Parkway and Golansky Blvd = 51,922
- Close to I-95 (1.4 Miles), Prince William Parkway, Ft. Belvoir, MCB Quantico and Potomac Hospital (2 Miles)
- **NOW OPEN!** New State-of-the-Art Assisted Living Facility within Prince William Commons

Outstanding Facilities. Unparalleled Service. | i95businessparks.com

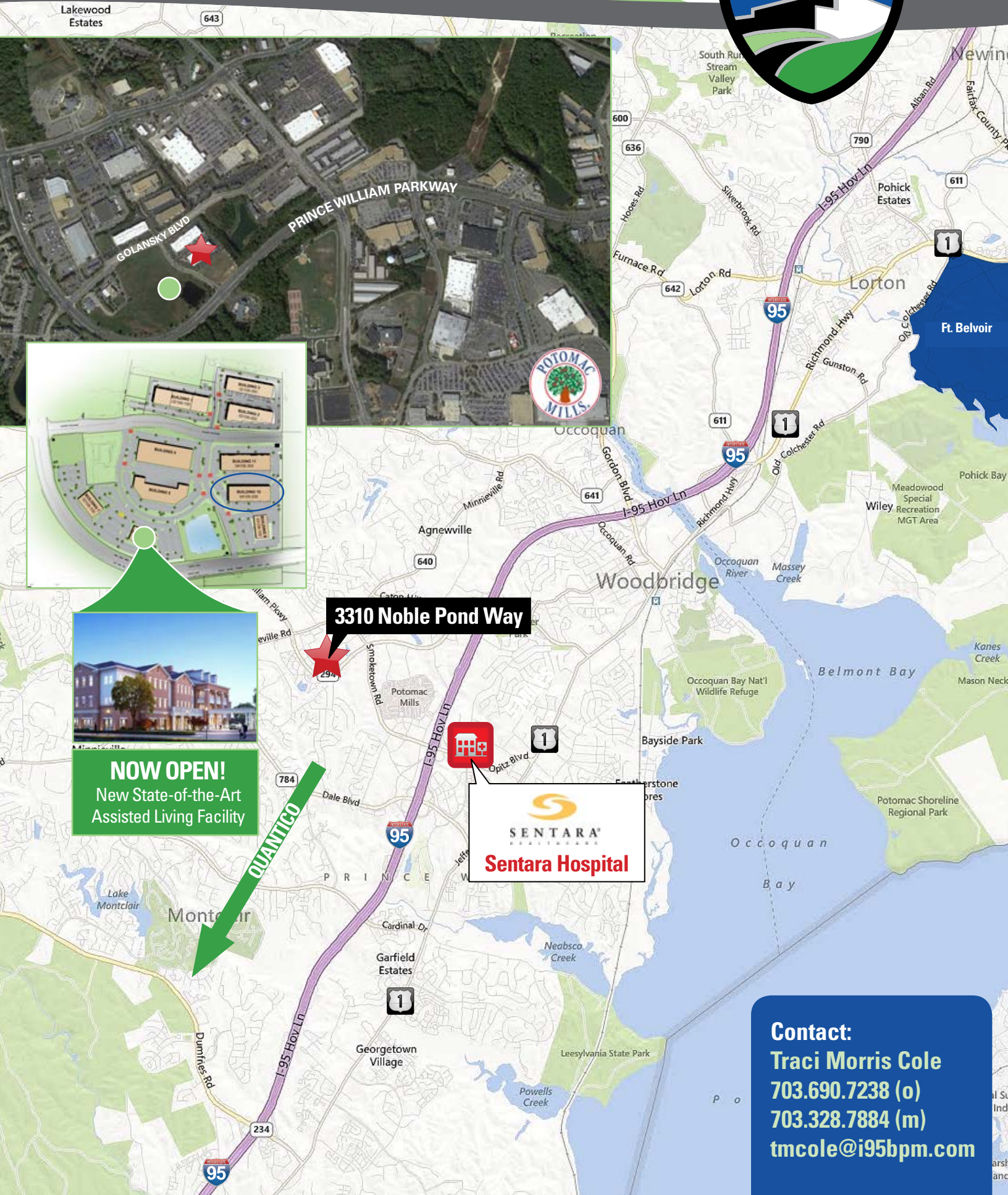
Contact:

Traci Morris Cole

703.690.7238 (o)

703.328.7884 (m)

tmcole@i95bpm.com



NOW OPEN!
New State-of-the-Art
Assisted Living Facility

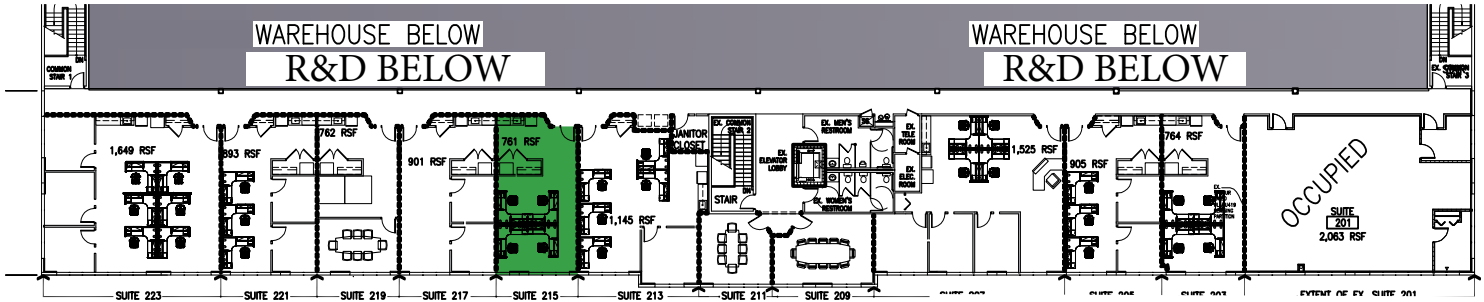
3310 Noble Pond Way



Contact:
Traci Morris Cole
703.690.7238 (o)
703.328.7884 (m)
tmcole@i95bpm.com



SECOND FLOOR



↑
SUITE 215
761 SF

FIRST FLOOR



Contact:
Traci Morris Cole
703.690.7238 (o)
703.328.7884 (m)
tmcole@i95bpm.com